



PREPARATION

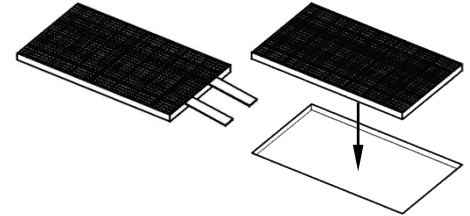
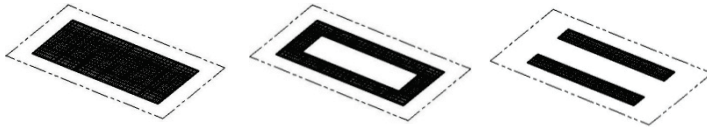
ASPIRATING PLANTS



BASEMENT

Different options:

- Civil work mixed or entire basement.
- Metallic box basement: recessed or floor-over.
- With grating over Paint-Stop filters.



ASPIRATION GROUP

Aspiration group with dry filters.

Built to help the air outlet in the preparation area, and installed at the end of the air circuit, over the air outlet section.

Composed by:

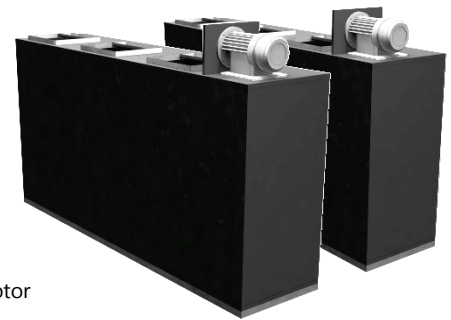
- Metallic support structure
 - Composed by a galvanized and bended sheet with a thickness of 15/10, riveted and sealed, forming a compact structure, reinforced to give it a high rigidity.
 - The two panels which make up the mobile hatches that serves to the inspection of the filters and the ventilation section, are fixed to the structure with a quick disassembly system, that make possible an easy maintenance.
 - Every panel has some handles to make the movement easier.



- Filter section.

Composed by stainless Steel trays that support filters with these characteristics:

- Stainless Steel outline.
- Synthetic filter model VNF/290 with not woven fibers progressively structured.
- The clean air face printed with the DIN identification and the allowed number.
- Effectiveness: 90% gravimetric according to ASHRAE 52/76
- Class: "G-3" according to European regulations EN-779.
- Welded mesh with "V" form and fixing in a sandwich panel the filter.
- Final leak to a dirty filter: 20 mm. H2O.



- Ventilation section

- The ventilation section is composed by a paddle-wheel fan with aspiration, joint to the motor by belts and pulleys.
- At the end of the tree of the fan a pulley is placed, and is where the trapezoidal drive belt passes.
- The motor is installed on rails that allow an easy regulation of the belts tension

